

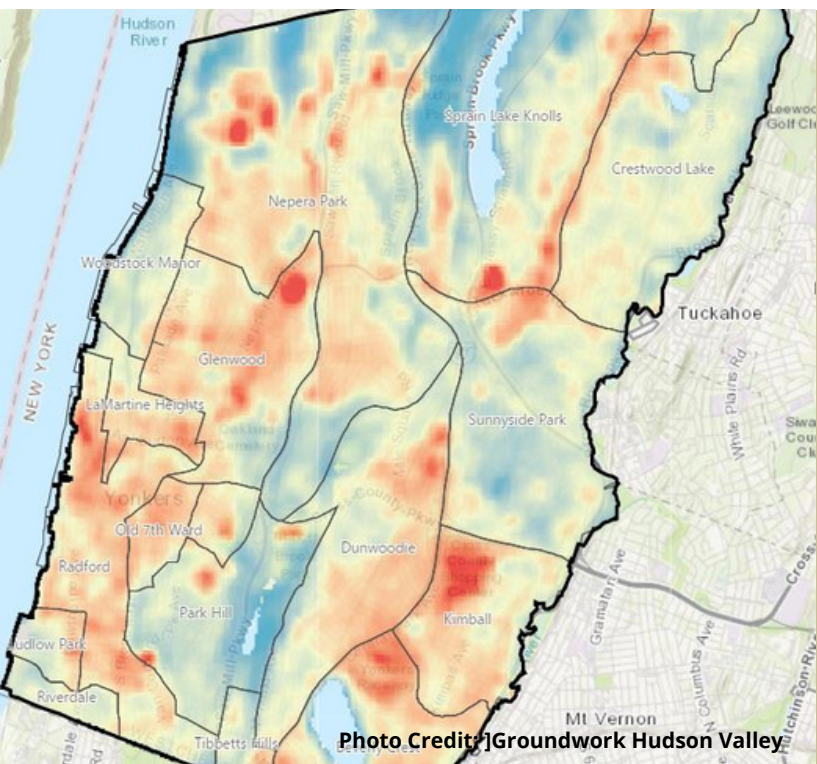
Saw Mill River and Hudson River Stakeholder Report

LOOK DEEP INTO NATURE, AND THEN YOU WILL UNDERSTAND EVERYTHING. - ALBERT EINSTEIN



"THE RIVER IS LOW"

"The river is low" was a reverberating statement from our volunteers that arrived in the lab this week after sampling. Even after the mention of how lovely and comfortable our spring and summer seasons have been, there was still much concern for the lack of rainfall we have been seeing lately within the watershed. Surprising amounts of bacteria were found throughout the Saw Mill river and its tributaries yesterday - even with the reported lack of rainfall and low water levels across the watershed.



(The Distinguished River): A section of our newsletter dedicated to the great ever changing rivers

Green infrastructure provides many communal benefits, including the mitigation of storm water from our overwhelmed sewage treatment plants.

Another benefit being explored by the Climate Safe Yonkers Task Force (a Climate Safe Neighborhoods Partnership by Groundworks USA), is the benefits of green infrastructure on heat island effect.

This group of concerned community members are being provided the opportunity to learn more about the impacts of heat on quality of life in Yonkers and provided the platform to create actionable opportunity to establish lasting positive change.

To learn more about this effort, [visit here](#).

Photo Credit: Groundwork Hudson Valley

(DATA):

Most Probable Number (MPN) of Colony Forming Enterococcus Bacteria per 100ml sample. EPA recommends public notification and possible temporary beach closure for single Enterococcus samples above 60 cells/100ml. Samples testing above this threshold appear in **red** on the Riverkeeper website, while those below it appear in **green**. To avoid exposure to chronic contamination, the geometric mean, a weighted 30-day average, should not exceed 30 cells/100ml. To avoid exposure to occasional high levels of contamination, no more than 10% of samples should exceed 110 cells/100ml.

Watershed	River Mile	Site ID	Site Name	Sample Date	Sampling Time	MPN*
Hudson	-	SMR-HR-20	(YONKERS) JFK Marina Boat Launch	7/7/22	9:10 A	<10
Hudson	-	SMR-HR-18.5	(YONKERS) Yonkers Paddling and Rowing Club	7/7/22	11:43 A	10
Saw Mill	0.19	SMR-0.19	(Yonkers) SMR, Daylighted Section	7/7/22	11:49 A	84
Saw Mill	1.11	SMR-1.11	(YONKERS) Walsh Road	7/7/22	1:13 P	259
Saw Mill	2.44	SMR-2.44	(YONKERS) Torre Place	7/7/22	12:54 P	98
Saw Mill	4.22	SMR-4.22	(YONKERS) Hearst Street	7/7/22	9:30 A	109
Saw Mill	4.87	SMR-4.87	(HASTINGS) S. County Trail Boat Access at Farragut Avenue	7/7/22	9:15 A	164
Saw Mill	7.9	SMR-7.9	(ARDSLEY) V.E. Macy Park Ballfields	7/7/22	9:48 A	41
Saw Mill	10.31	SMR-RB-0.13	(GREENBURG) Rum Brook Tributary	7/7/22	9:00 A	556
Saw Mill	10.41	SMR-10.41	(GREENBURG) Rum Brook Park Ballfields	7/7/22	8:50 A	145
Saw Mill	11.72	SMR-MB-0.15	(ELMSFORD) Mine Brook Tributary	7/7/22	9:00 A	292
Saw Mill	11.82	SMR-11.82	(ELMSFORD) Above Mine Brook	7/7/22	9:05 A	556
Saw Mill	14.88	SMR-14.88	(MOUNT PLEASANT) Saw Mill River Road	7/7/22	9:27 A	269
Saw Mill	17.57	SMR-NB-0.07	(MOUNT PLEASANT) Nannyhagen Brook Tributary	7/7/22	9:13 A	275
Saw Mill	18.84	SMR-18.84	(PLEASANTVILLE) Pleasant Avenue	7/7/22	8:40 A	253
Saw Mill	20.66	SMR-TB-0.34	(NEW CASTLE) Tertia Brook Tributary	7/7/22	9:02 A	1201
Saw Mill	21.18	SMR-21.18	(NEW CASTLE) Duck Pond Spillway	7/7/22	8:53 A	<10



SPECIAL ACKNOWLEDGMENTS

The program is funded in part by ConEdison and is part of the Lower Hudson Urban Waters Collaborative which includes CURB, Riverkeeper, and Bronx River Alliance.

We also take a moment to thank YOU!



WE ACKNOWLEDGE YOUR SUPPORT IN HELPING US CREATE A UNIFIED VOICE SURROUNDING OUR LOCAL WATERWAYS THROUGH VOLUNTEERING, RESEARCH, EDUCATION, AND OUTREACH. IF YOU WISH TO BECOME MORE INVOLVED AND LEARN HOW YOU CAN SUPPORT US, VISIT OUR WEBSITE AT

WWW.CENTERFORTHEURBANRIVER.ORG

TO ACCESS PAST NEWSLETTERS, VISIT
WWW.CENTERFORTHEURBANRIVER.ORG/RESEARCH/WATER-QUALITY.HTML