



SARAH
LAWRENCE
COLLEGE

CENTER FOR THE URBAN RIVER AT BECZAK

SAW MILL & HUDSON RIVER STAKEHOLDER REPORT

This research is part of the lower Hudson urban waters collaborative in partnership with the Bronx River Alliance and Riverkeeper. Data as part of this research is also shared with partner databases such as Riverkeeper and the Community Water Quality Testing program.

**A SPECIAL THANK YOU TO OUR PROGRAM
FUNDER CONEDISON FOR THEIR
CONTINUED SUPPORT OF THIS PROJECT**



conEdison, inc.

OCTOBER 2025

The end of the sampling season is always incredibly bittersweet - I am so happy that we were able to collect and analyze another year of information from our beloved river; but, I will greatly miss seeing all of our samplers in the lab. Yesterday I excitedly greeted each river protector, interested to hear how their site conditions were after it rained in the watershed on Wednesday. We chatted about winter plans, the annual water quality summary, and the upcoming happenings at CURB. Some of the samplers have been participating in the research for upwards of 8+ years and always have incredible insight and inquiry around the health of the river. A compilation of photos taken by samplers is present at the end of this report such that you can also experience each of these sites throughout this past season.

I want to thank everyone who continues to participate in sampling, reads through these reports, and engages in these conversations about our community and waterways. A full summary of the years data will be made available in the upcoming weeks.

MONTHLY WEATHER SUMMARY

This has been one of the driest months we have seen this sampling season. Most rain events within the past month released less than 0.08" of rain, which quickly absorbed into the dehydrated earth. Even after the 0.19" of rain on Wednesday 10/8, samplers reported no change in water levels of the Saw Mill River; however, the fecal indicator bacteria was incredibly present.

Timespan: 9/9/25 - 10/9/25

Percent of month impacted by rain events*: 6.7777%

Total rain fall amounts for the month: 0.7 inches

*At least 0.1" of rainfall recorded on a single day

PHOTO OF THE MONTH



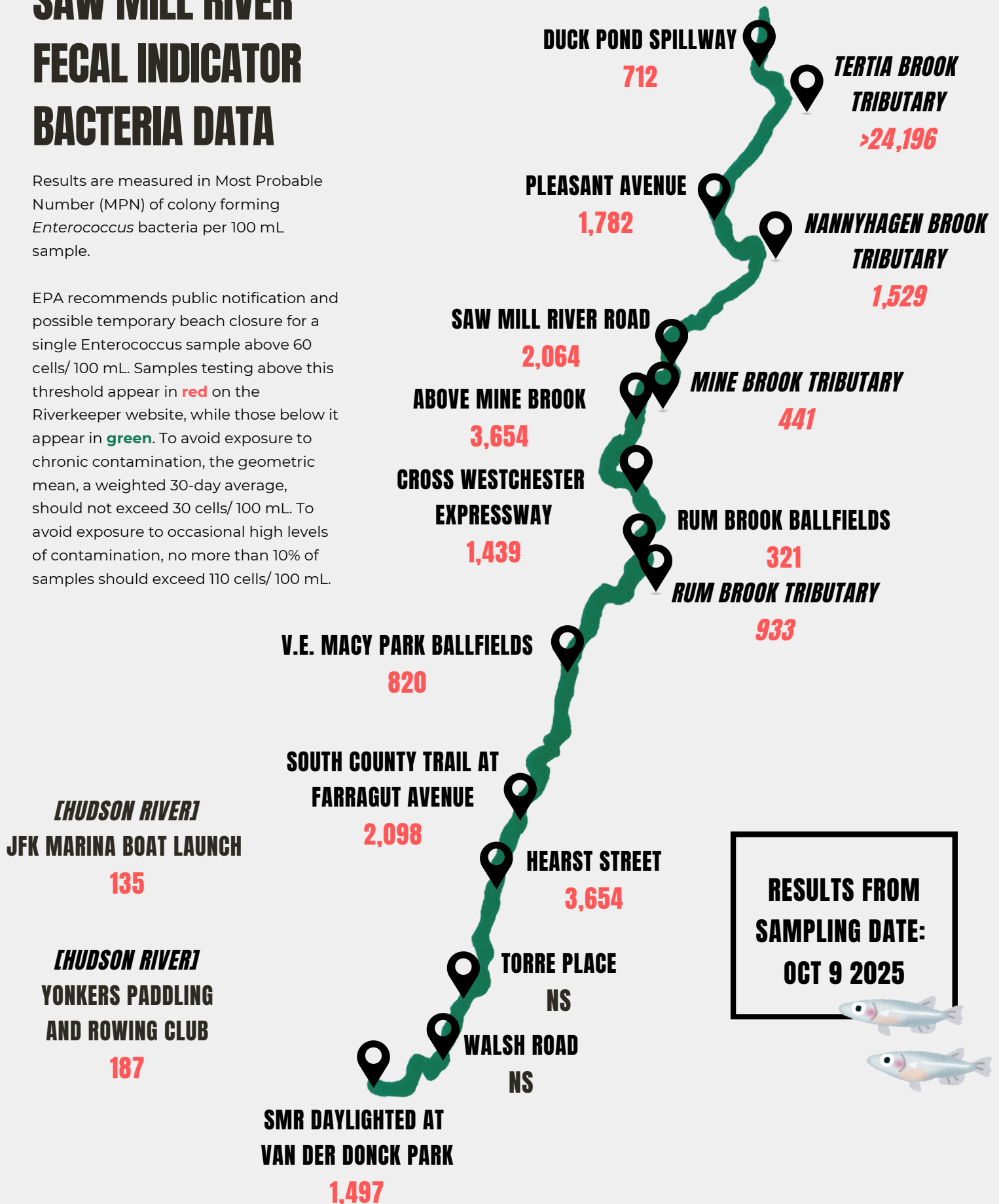
PHOTO CREDIT: JOEL RODRIGUEZ

LOCATION: CROSS WESTCHESTER EXPRESSWAY

SAW MILL RIVER FECAL INDICATOR BACTERIA DATA

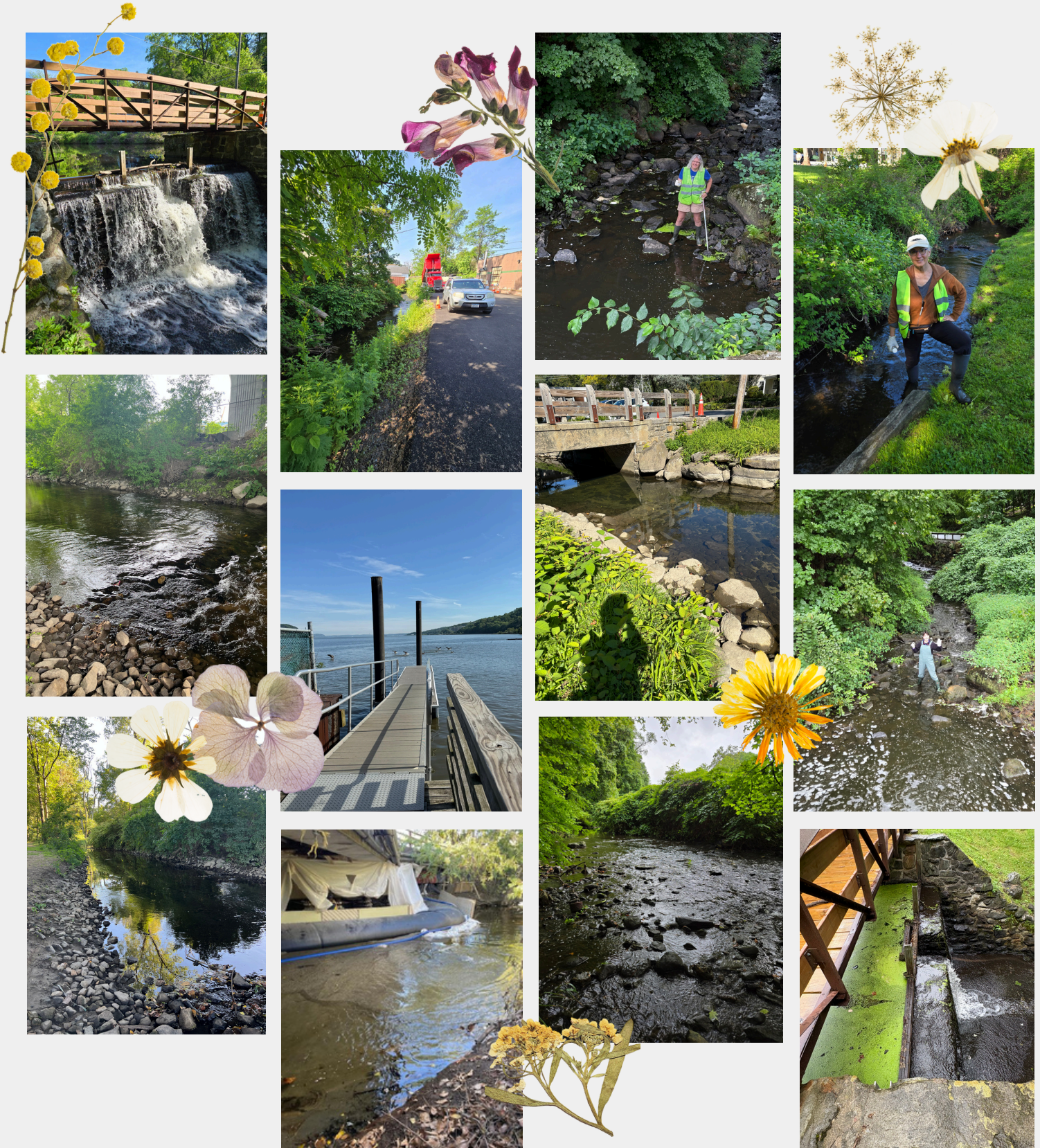
Results are measured in Most Probable Number (MPN) of colony forming *Enterococcus* bacteria per 100 mL sample.

EPA recommends public notification and possible temporary beach closure for a single *Enterococcus* sample above 60 cells/100 mL. Samples testing above this threshold appear in **red** on the Riverkeeper website, while those below it appear in **green**. To avoid exposure to chronic contamination, the geometric mean, a weighted 30-day average, should not exceed 30 cells/100 mL. To avoid exposure to occasional high levels of contamination, no more than 10% of samples should exceed 110 cells/100 mL.



(THE DISTINGUISHED RIVER)

A SECTION OF OUR NEWSLETTER DEDICATED TO THE GREAT EVER CHANGING RIVERS



A special thank you to all of our amazing samplers for their documentation of the river this year - Sharon, Bill, Sarita, Artie, Joel, Lee, Kirsten, Marcia, Lauren, Steve, Diane, and Helen.